

Hamburger Notes Netzwerk

IBM Collaboration Solutions Domino on Cloud

Hamburg, Februar 2015

Andreas Schulte, andreas.schulte@de.ibm.com

Mit Material von Niklas Heidloff, Matthias Schneider,
IBM Cloud onboarding Team - © 2014, 2015 IBM Corporation

Acknowledgements and Disclaimers

Availability. References in this presentation to IBM products, programs, or services do not imply that they will be available in all countries in which IBM operates.

The workshops, sessions and materials have been prepared by IBM or the session speakers and reflect their own views. They are provided for informational purposes only, and are neither intended to, nor shall have the effect of being, legal or other guidance or advice to any participant. While efforts were made to verify the completeness and accuracy of the information contained in this presentation, it is provided AS-IS without warranty of any kind, express or implied. IBM shall not be responsible for any damages arising out of the use of, or otherwise related to, this presentation or any other materials. Nothing contained in this presentation is intended to, nor shall have the effect of, creating any warranties or representations from IBM or its suppliers or licensors, or altering the terms and conditions of the applicable license agreement governing the use of IBM software.

All customer examples described are presented as illustrations of how those customers have used IBM products and the results they may have achieved. Actual environmental costs and performance characteristics may vary by customer. Nothing contained in these materials is intended to, nor shall have the effect of, stating or implying that any activities undertaken by you will result in any specific sales, revenue growth or other results.

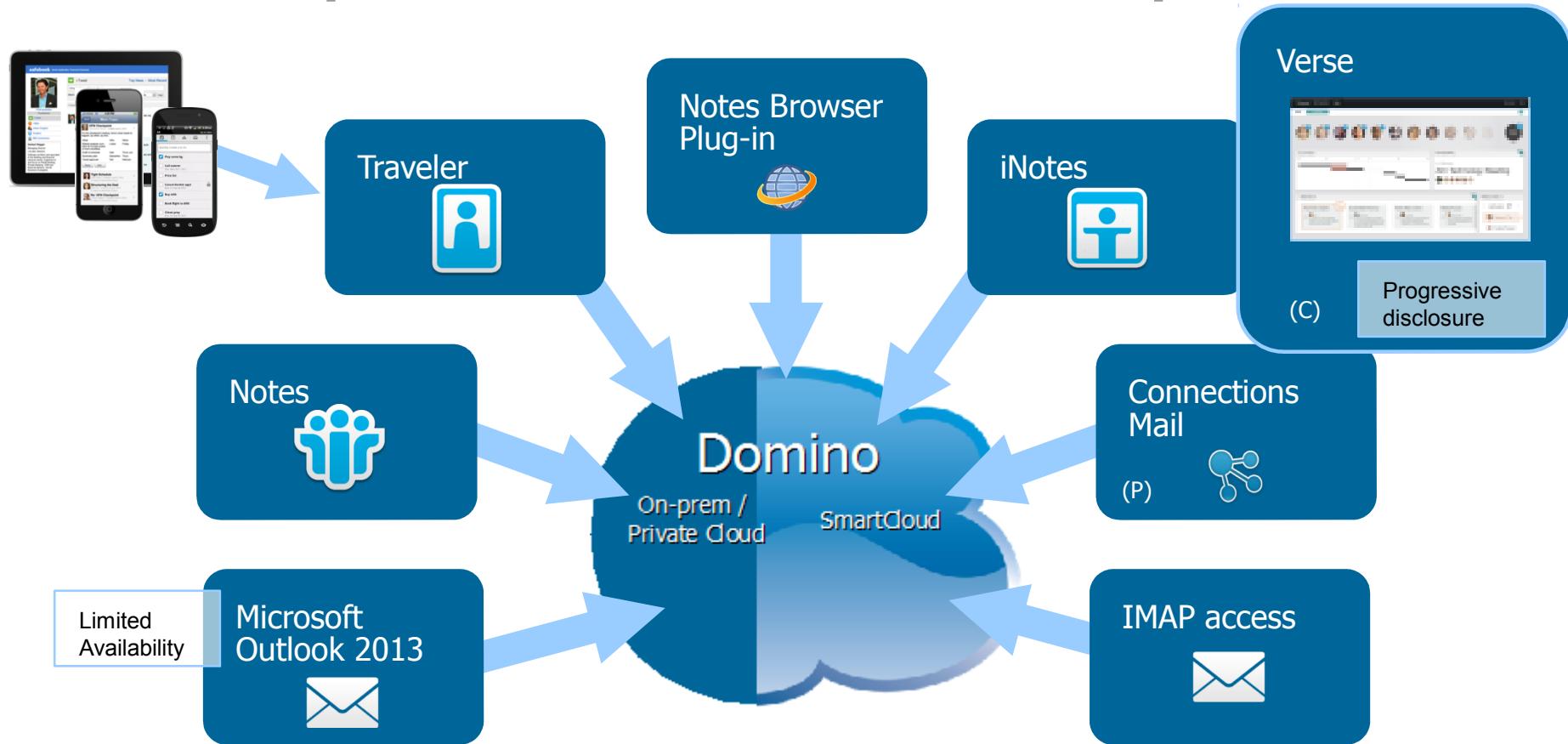
© Copyright IBM Corporation 2015. All rights reserved.

- U.S. Government Users Restricted Rights - Use, duplication or disclosure restricted by GSA ADP Schedule Contract with IBM Corp.
- IBM, the IBM logo, ibm.com and IBM SmartCloud® are trademarks or registered trademarks of International Business Machines Corporation in the United States, other countries, or both. If these and other IBM trademarked terms are marked on their first occurrence in this information with a trademark symbol (® or ™), these symbols indicate U.S. registered or common law trademarks owned by IBM at the time this information was published. Such trademarks may also be registered or common law trademarks in other countries. A current list of IBM trademarks is available on the Web at “Copyright and trademark information” at www.ibm.com/legal/copytrade.shtml

GitHub is a trademark: <https://help.github.com/articles/github-trademark-policy>

Other company, product, or service names may be trademarks or service marks of others.

IBM provides choice in client experience



I... / P... / S... as a Service

IBM Verse
Notes Mail
iNotes

SOFTLAYER[®]
an IBM Company



On Premises



IaaS



PaaS



SaaS



CLOUD FOUNDRY

Applications

Data

Runtime

Middleware

O/S

Virtualization

Servers

Storage

Networking

Applications

Data

Runtime

Middleware

O/S

Virtualization

Servers

Storage

Networking

Applications

Data

Runtime

Middleware

O/S

Virtualization

Servers

Storage

Networking

Applications

Data

Runtime

Middleware


O/S

Virtualization

Servers

Storage

Networking

 Client managed

 Vendor managed

**Der Vollständigkeit halber aber heute kein
Thema:**

**Domino / Connections
hybrid**

Domino Plattformen für Anwendungen in der Cloud













Service Level	Produkt	Managed by
Infrastruktur as a Service (IaaS)	Domino on Softlayer	Business Partner IBM
Plattform as a Service (PaaS)	BlueMix	IBM *)
Software as a Service (SaaS)	Business Partner Solutions	Business Partner

*) BlueMix kann auch als dedizierte private Instanz auf Softlayer durch Kunden und Business Partner betrieben werden.

Domino Anwendungen

	Anwendungen im Browser		Notes
Plattform	XPages	NBP	Standardclient
Betriebssystem	Browser definiert	Windows	Windows, Mac, Linux
Protokoll	http(s)	NRPC	NRPC
Mail Integration	iNotes (Verse)	iNotes (Verse)	Notes Mail
Notes native GUI	nein	ja	ja
Mobile Apps	ja	nein	nein
Responsive Design	ja	nein	nein
MVC Pattern	ja	nein	nein
SQL RD BMS	ja	nein	nein
Watson Integration	via Bluemix	nein	REST (nicht getestet)
Portal Integration	ja	Nicht getestet	nein

Technische Zielszenarien aus Clientsicht

Client zu Server:	Domino on Cloud	Domino on premises
Mail Notes Standardclient		
Mail Browser		
NSF Anwendung im Standardclient		
NSF Anwendung im Browser		
Mail auf mobilem Device		
NSF Anwendung auf mobilem Device		

... oder hybride Mischungen davon.

Mail powered by Domino on Cloud

	Verse	Notes	iNotes	Outlook 2013
iOS	ja	Via Traveler	ja	Via Traveler
Android	(ja)	Via Traveler	ja	Via Traveler
Blackberry	(keine Informationen)	BES 9 oder via Traveler	Ultralite nein	BES 9 oder via Traveler
Windows	ja	ja	ja	(ja)
Mac	(ja)	ja	ja	nein
Linux	(ja)	ja	ja	nein

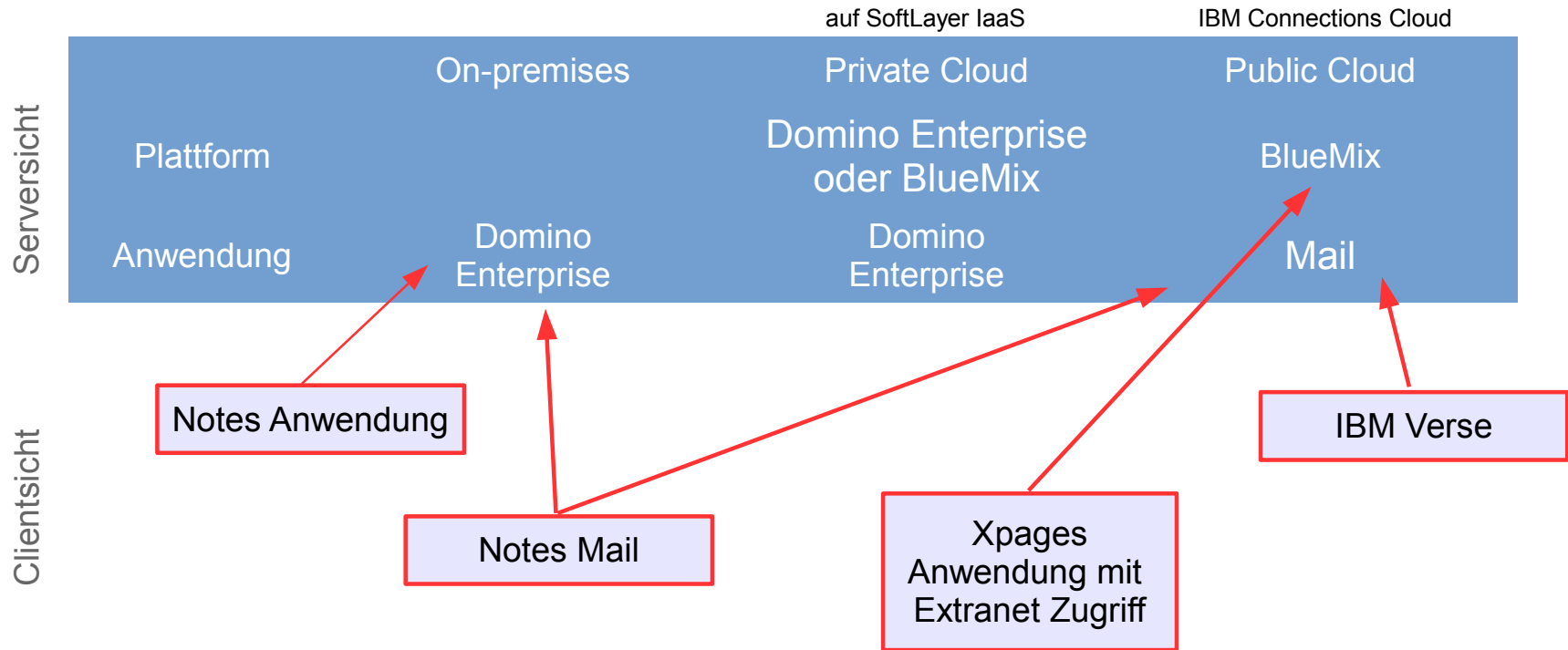
*) via Traveler = Unterstützung der nativen eMail Anwendung des mobil OS

(ja) = Roadmap oder in Prüfung – kann ohne Ankündigung durch IBM entfallen

Domino „hybrid deployment“ Optionen

Serversicht	auf SoftLayer IaaS		IBM Connections Cloud
	On-premises	Private Cloud	Public Cloud
	Plattform	Domino Enterprise oder BlueMix	BlueMix
Anwendung	Domino Enterprise	Domino Enterprise	Mail

Domino „hybrid deployment“ Optionen



IBM Domino – Mail Server

Hybrid Implementation and Configuration



IBM Domino – Mail Server

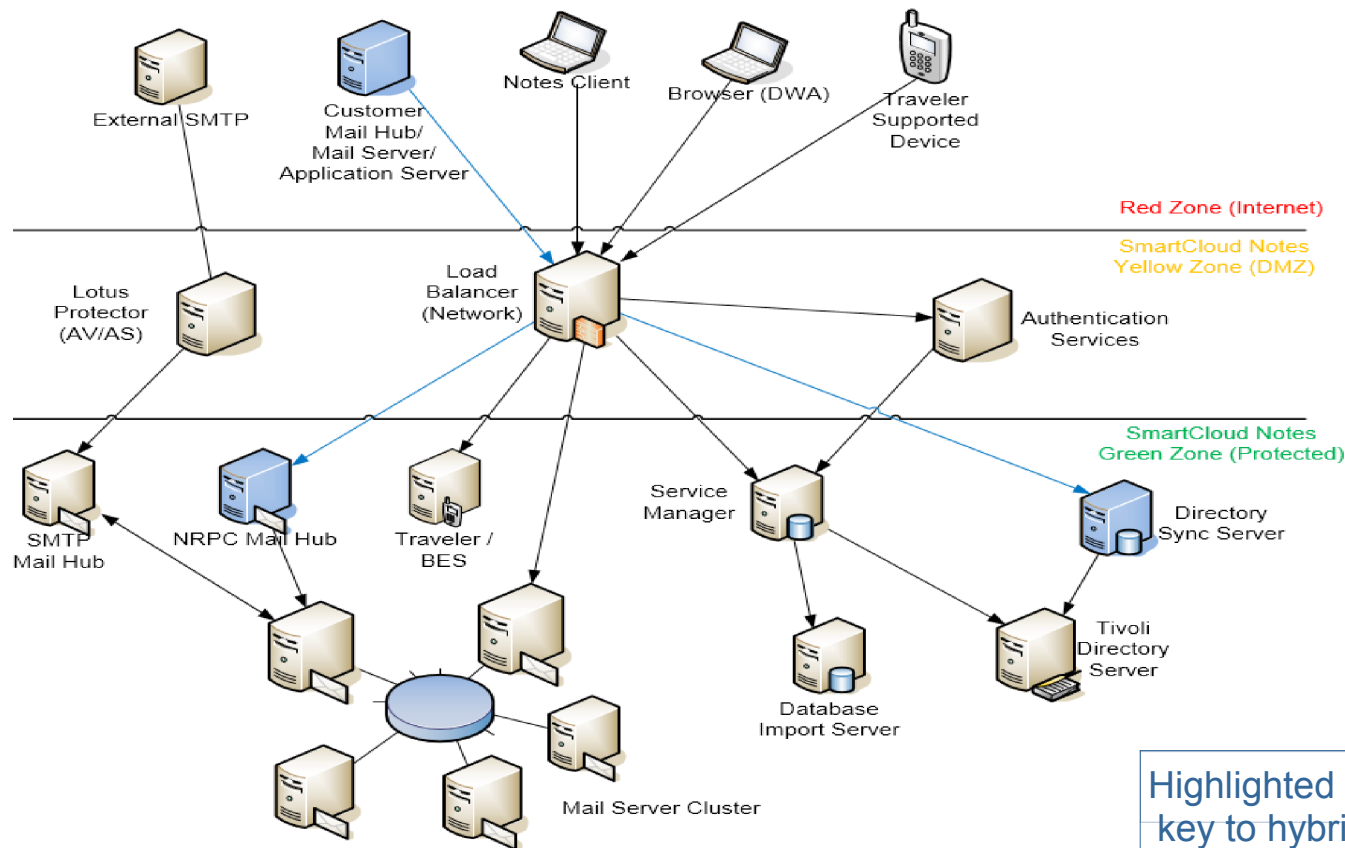
Hybrid Implementation and Configuration

- SmartCloud Notes “Hybrid” Reference Architecture
- Key Value Propositions of “Hybrid” Configuration
- Common SmartCloud Notes “Hybrid” Configurations
- Setting Up the “Hybrid” Configuration
- Creating the SmartCloud Customer Account
- Configuring the SmartCloud “Hybrid” Account Information
- Related Materials

IBM Domino – Mail Server Hybrid Implementation and Configuration

- SmartCloud Notes “Hybrid” Reference Architecture
 - Key Value Propositions of “Hybrid” Configuration
 - Common SmartCloud Notes “Hybrid” Configurations
 - Setting Up the “Hybrid” Configuration
 - Creating the SmartCloud Customer Account
 - Configuring the SmartCloud “Hybrid” Account Information
 - Related Materials

Connections Cloud - Notes "Reference" Architecture



What Does “Hybrid” Mean ?

- It allows existing IBM® Domino® customers to integrate the on-premises environment and is a core strength and value proposition
- It defines the administrative model allowing more control using standard on-premises administration tools (Domino Administrator client, Domino Directory)
- As a “Hybrid” customer, the customer Admin can choose if the mail users mail account exists on-premises or in the SmartCloud Notes service.
- It is designed to support both transitory or perpetual coexistence
- Customers select the “Hybrid Environment” option when performing initial setup
- In the context of SmartCloud Notes, it refers to a specific configuration of the SmartCloud Notes customer account within the service

IBM SmartCloud Notes

Your SmartCloud Notes subscription is active. You can now set up your account.

During setup you are asked to provide an Internet domain name for your Internet mail, an organization name, and a base name for your SmartCloud Notes mail servers. For more information, see the [wiki](#).



Hybrid Environment

Select this option only if you will set up a hybrid environment.

In a hybrid environment, SmartCloud Notes becomes a virtual extension of a Lotus Domino deployment already in place at your company site. Any users who continue to use company managed Domino mail servers can seamlessly send mail and calendar invitations to SmartCloud Notes users. During account setup you provide information about your environment that enables the SmartCloud Notes service to connect to it. Before continuing, make sure you have prepared your environment, as described in the [wiki](#).

IBM Domino – Mail Server

Hybrid Implementation and Configuration

- SmartCloud Notes “Hybrid” Reference Architecture
- Key Value Propositions of “Hybrid” Configuration
- Common SmartCloud Notes “Hybrid” Configurations
- Setting Up the “Hybrid” Configuration
- Creating the SmartCloud Customer Account
- Configuring the SmartCloud “Hybrid” Account Information
- Related Materials

Key Value Propositions of “Hybrid”

- Customers can keep current environment / investment in their existing Domino architecture
- Supports IBM® Notes®, browser, IMAP and mobile clients (Traveler and BlackBerry)
- Users don't need to care who is Hosted or On-Premises
 - e.g. user address lookup & mail routing just work
- Maintains the existing certificate hierarchy and domain structure
 - No cross-certification required
 - Users keep their existing ID files
 - Users keep their existing Internet mail addresses
 - SmartCloud Notes virtual servers are members of the same hierarchy / domain
 - Domino directories (primary, ex. dircat, etc.) are replicated into the service for synchronization
- Supports native NRPC mail routing
 - Preserves Domino specific items like database/document links and stored form content
- No change required to continue accessing existing applications
- Existing mail databases can be transitioned in their entirety or with a selected subset of data
 - Encrypted content remains intact
 - Private items remain intact
- Flexibility in deployment / transition time scale

IBM Domino – Mail Server

Hybrid Implementation and Configuration

- Connections Cloud Notes “Hybrid” Reference Architecture
- Key Value Propositions of “Hybrid” Configuration
- Common Connections Cloud Notes “Hybrid” Configurations
- Setting Up the “Hybrid” Configuration
- Creating the Connections Cloud Customer Account
- Configuring the Connections Cloud “Hybrid” Account Information
- Related Materials

Common Connections Cloud Notes “Hybrid” Configurations

- SmartCloud Notes becomes an extension of the customer environment
- User, Group and Policy management are performed as they are done today via the Domino Directory and Administrator client
- One or more directories are synchronized into SmartCloud Notes to provide common view of users, groups, policies, etc.
- By default, customer owns e-mail domains and receives all mail for those domains before routing to SmartCloud Notes
 - MX records can be pointed directly at SmartCloud Notes with service agreement
 - Outbound SMTP from SmartCloud Notes can be routed via alternate customer specified relay
- Internal Domino server handles directory replication (Domino 8.5.1 FP2 +)
 - List of directory replicas to be replicated
- e.g. names.nsf, otherdomainnames.nsf, exdircat.nsf, etc.
- Remote access via directory assistance is not supported
 - All directories need to be replicated to the directory synch server
 - EDC's supported for mail routing and name picker only (can't be used for user selection for provisioning)
 - Careful directory planning is needed prior to configuring your SmartCloud Notes company account

Hybrid Environment - Policies

- In a hybrid environment in which some mail files are on SmartCloud Notes servers and some are on-premises on company Domino servers, Domino Administrators can use explicit group policies to ensure that all users have the same Notes client experience.
- Some policy settings are enforced for all SmartCloud Notes users and cannot be overridden by a group policy.
- Other policy settings can be set by customer administrators and applied using explicit group policies via policy documents that are in their on-premises Domino directory.
- On-premises Domino administrators cannot open the SmartCloud Notes policy to view the settings. However, from the Domino Administrator client, they can view a detailed summary of the effective policy settings by viewing a policy synopsis for a selected user or group.
- Administrative policies in the SmartCloud Notes service (see online documentation)



Using administrative policies

Added by [IBM](#) | Edited by [Kendra Bowker](#) on February 8, 2013 | Version 3 ([Show original](#))

[Edit](#) | [More Actions](#) - ★★☆☆☆☆ (0 ratings)

Abstract

If you use administrative policies on premises, you can apply many of those same policy settings to service users to ensure that all users have the same working experience.

Tags: [policies](#), [administrative policies](#)

There are two types of policies, organizational and explicit. An organizational policy automatically applies to that company and is used to apply a small set of pre-defined policy settings to users in the service. In a hybrid environment, you can create explicit policies that mirror the on-premises organizational policy. You then apply the policy to service users.

For example, the fictitious Renovations Corporation has an on-premises organizational policy that applies to Samantha Daryn/Renov, is assigned this policy. But the Renov organizational policy cannot be used for service users who were in the on-premises Renov organizational policy. Next the administrator adds the name */Renov as a new group.

If you plan to use explicit group policies for your service users, take inventory of the following so that you can ensure that the service settings are consistent with the on-premises settings.

- Policy settings that are currently in place in your on-premises organization.
- Policy settings that are pre-defined for users in the service. Pre-defined policy settings apply to all service users.
- Policy settings that are supported by the service. If your on-premises policies include unsupported settings, you may need to update them.

If you are unfamiliar with using administrative policies, see the section on Policies in the User and Server Configuration Guide.

Policy settings supported by the service

In a hybrid environment, on-premises Lotus Domino administrators can use explicit group policies to apply settings to service users by a group policy. Other policy settings can be set by on-premises administrators and applied using explicit group policies.

Policy settings that are pre-defined for users in the service

In a hybrid environment, on-premises administrators can use policies to ensure that the Lotus Notes client settings are consistent with the service settings. The following tables list the specific policy settings that are enforced for service users.

Using policies to configure message disclaimers

In a hybrid environment, the service supports adding message disclaimers to outgoing mail sent from service users. They are often used to protect the legal interests of an organization.

Using policies with SmartCloud Traveler

Hybrid Configuration Software Version Requirements

Version requirements for on-premises Domino Servers (Stand: Okt. 2014)

On-Premises Server Type	Supported Versions
<ul style="list-style-type: none">• Mail routing server (in the directory synchronization and mail routing domain)	<ul style="list-style-type: none">• Lotus Domino 8.5.1 Fix Pack 2• Lotus Domino 8.5.2, 8.5.3 (or later)• IBM Domino 9.0 (or later)
<ul style="list-style-type: none">• Directory synchronization server (in the directory synchronization and mail routing domain)	<ul style="list-style-type: none">• Lotus Domino 8.5.1 Fix Pack 2• Lotus Domino 8.5.2, 8.5.3 (or later)• IBM Domino 9.0 (or later)
<ul style="list-style-type: none">• Mail servers that request the free time of Cloud Notes users	<ul style="list-style-type: none">• Lotus Domino 8.5.1 Fix Pack 2• Lotus Domino 8.5.2, 8.5.3 (or later)• IBM Domino 9.0 (or later)
<ul style="list-style-type: none">• Passthru domain servers	<ul style="list-style-type: none">• Any supported version of Lotus Domino• Use Lotus Domino 8.5.2 (or later) for fastest response time for connections from SmartCloud Notes to on-premises servers.

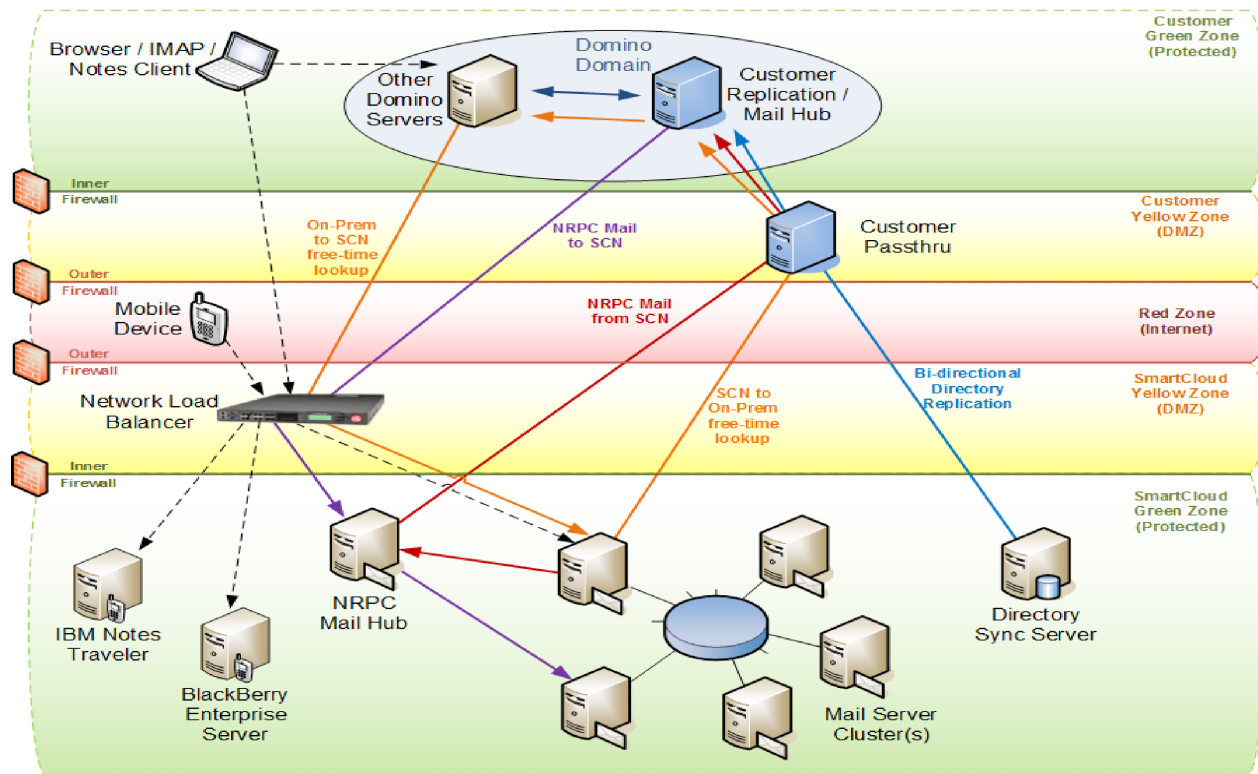
“Hybrid” – Basic Architecture

Most suitable for implementations where HA is not a requirement (e.g. pilot or smaller customer implementations)

- Single Domino domain
- Single Domino passthru server
- Single combined Domino mail routing and directory replication server

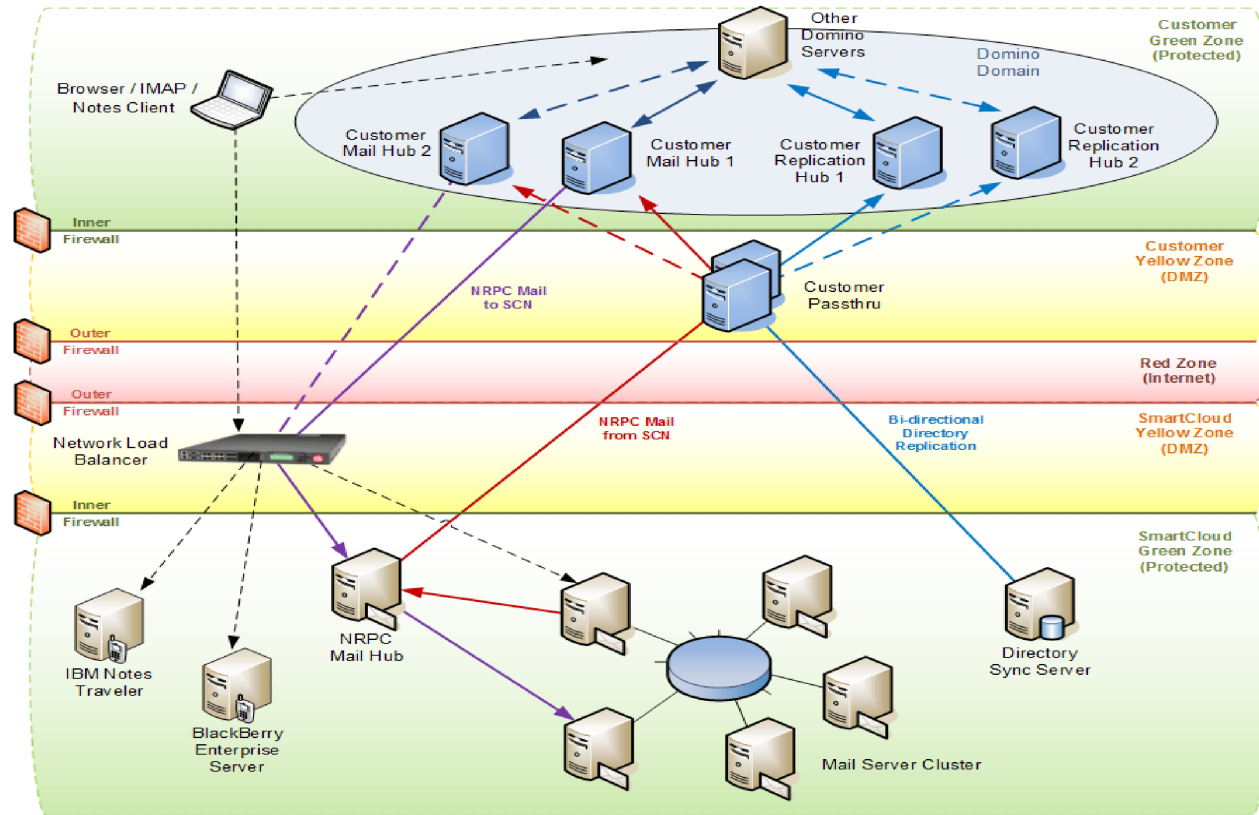
Customer data flow:

- On-premises Domino directory sync occurs with SmartCloud Directory Sync Server replicating with replication hub server via the passthru server
- SmartCloud Notes NRPC mail from service users to on-premises users routed to mail hub via passthru server
- On-premises NRPC mail sent to SmartCloud Notes users routed from on-premises mail (hub) server(s) to the service NRPC mail hub via network load balancers



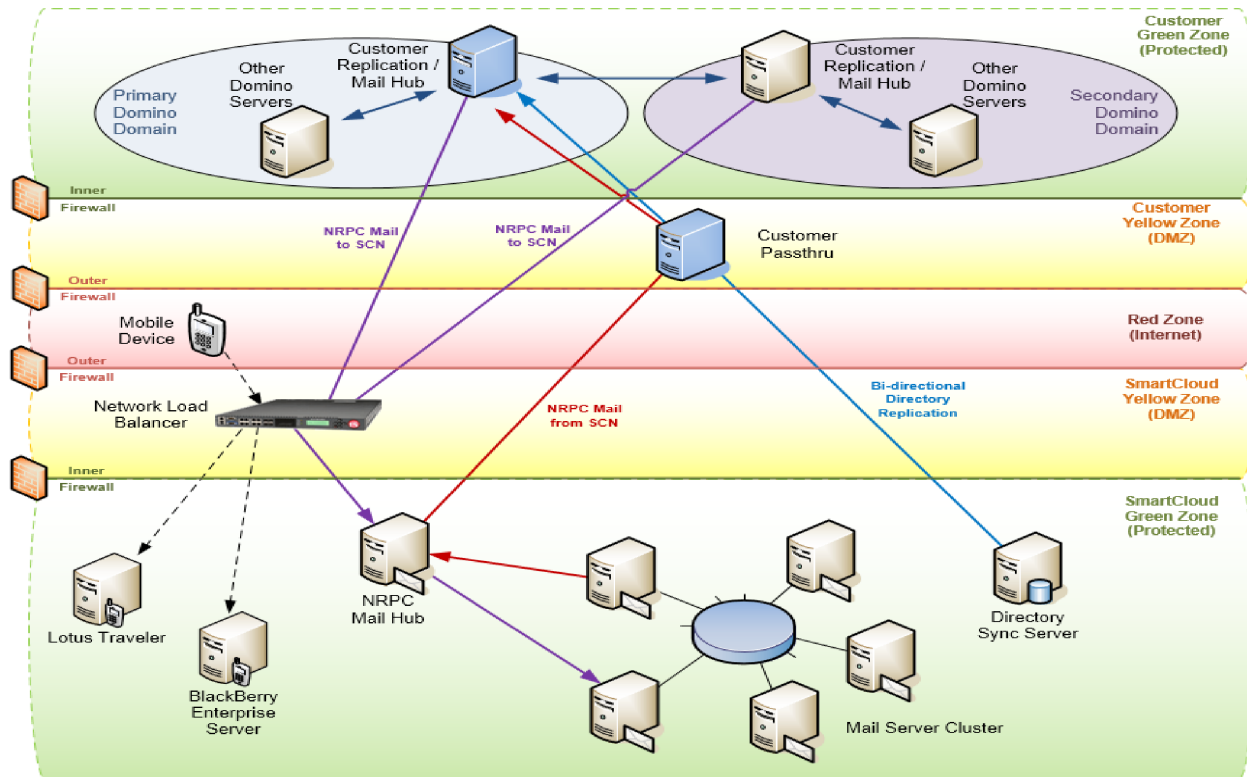
“Hybrid” – High Availability Implementation

- **Single Domino domain**
- Up to two Domino servers
- acting in passthru roles
- Up to two Domino servers
- performing mail routing
- Up to two Domino servers for directory replication



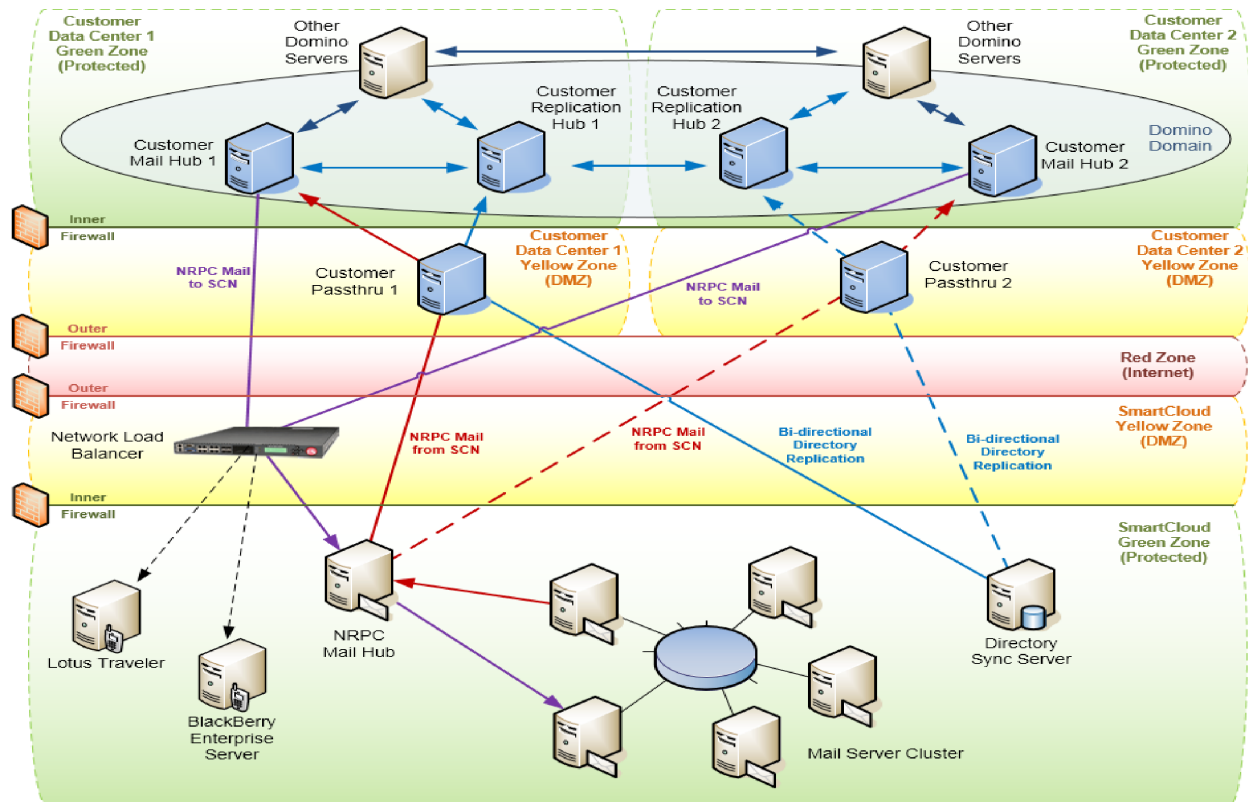
“Hybrid” – Multiple Domain Architecture

- **Multiple** Domino domains
- One domain designated as **primary** through which hybrid connectivity from SmartCloud Notes is achieved
- Other domains become subordinates in the context of mail routing, free-time lookup and directory replication
- Directory updates from **downstream** domains are replicated via the directory replication hubs in **primary** domain
- Each domain is responsible to **independently** route mail **directly** to the SmartCloud Notes service.
- **Note:** Once the account is configured for the primary domain the customer creates group / connection documents for each additional domain in their environment.



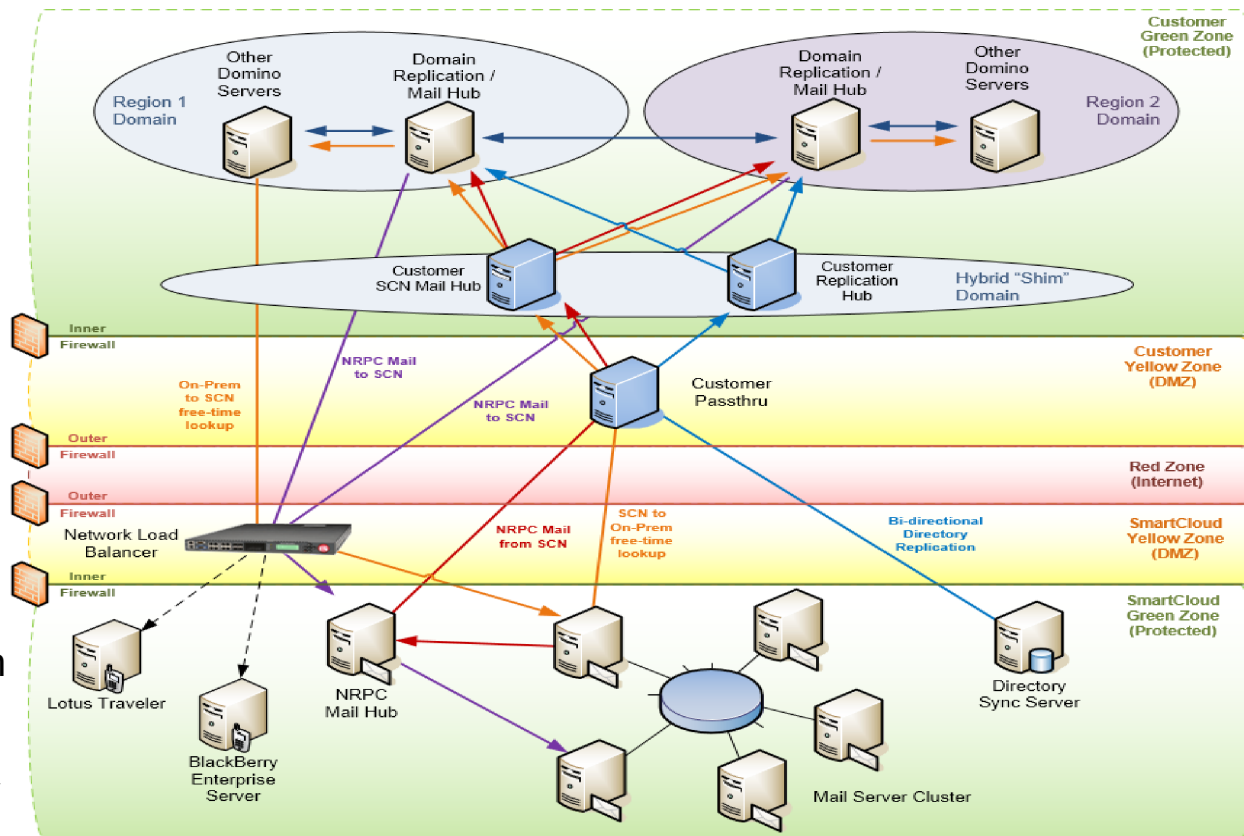
“Hybrid” – Multiple Data Center Implementation

- **Single** Domino domain
- **Pair** of customer data centers
- **Pair** of passthru servers (**primary** in one data center and **secondary** in the other data center)
- **Separate** mail routing and directory replication hub servers in each data center
- Provides for **both** a level of local (within data center) resilience and DR protection in the event of **data center failure**



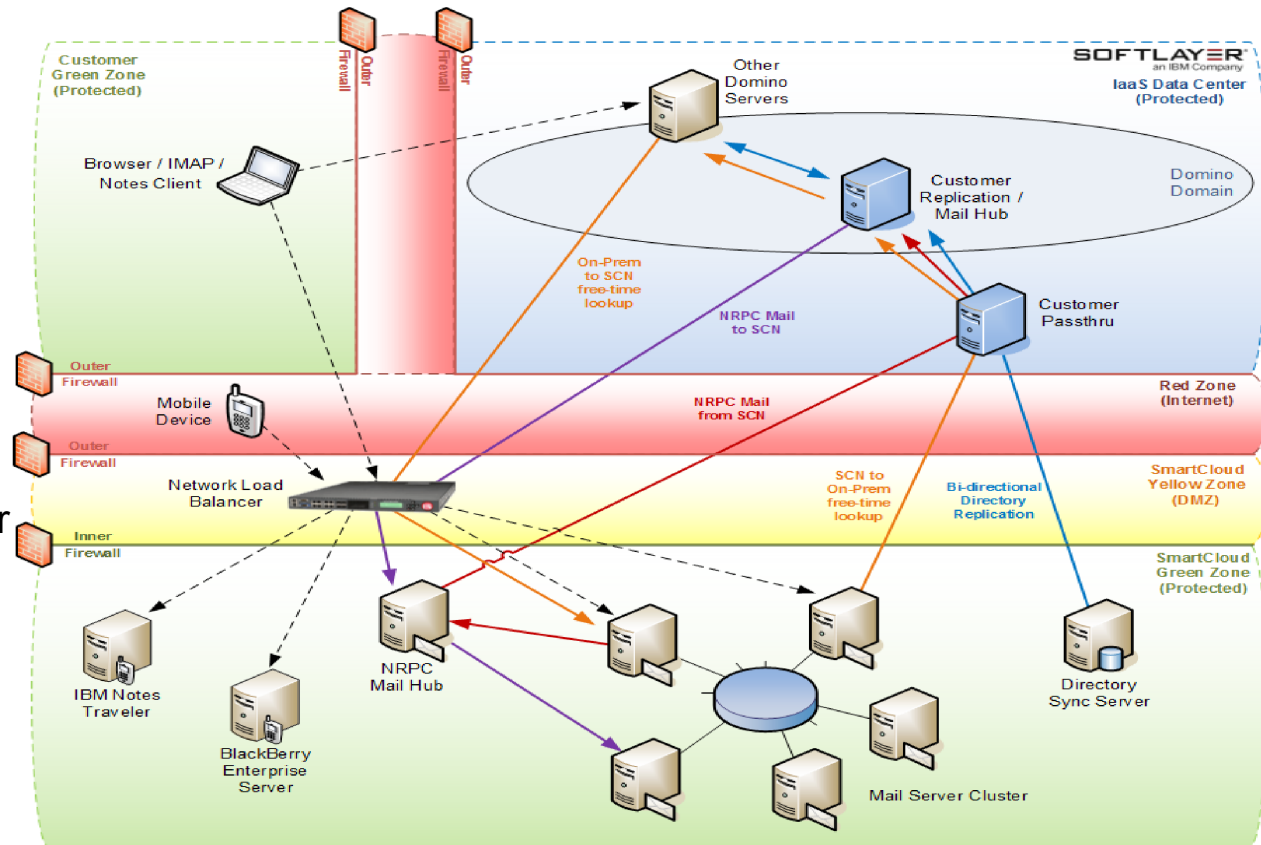
“Hybrid” – ‘Shim’ Domain Between SCN & Existing Domains

- Hybrid “shim” domain inserted **between** SCN and multiple other existing domains
- Existing domains are all **subordinate** (route mail and replicate directory through) the “shim” domain
- Single passthru server (a second could be added for failover)
- Separate mail routing and directory replication hub servers
- Note:** Once the account is configured for the shim domain the customer creates group / connection documents for each additional domain in their environment.



“Hybrid” – Leveraging Infrastructure-as-a-Service for Domino Applications

- Single Domino domain
- Single passthru server
- Single combined Domino mail routing and directory replication server
- Domino application and “hybrid” integration servers (like passthru) hosted on **IBM SoftLayer** or other IaaS providers
- No Domino servers on customer network
- **Note:** Customer DMZ and optional SoftLayer firewalls not shown



... ab in die Cloud

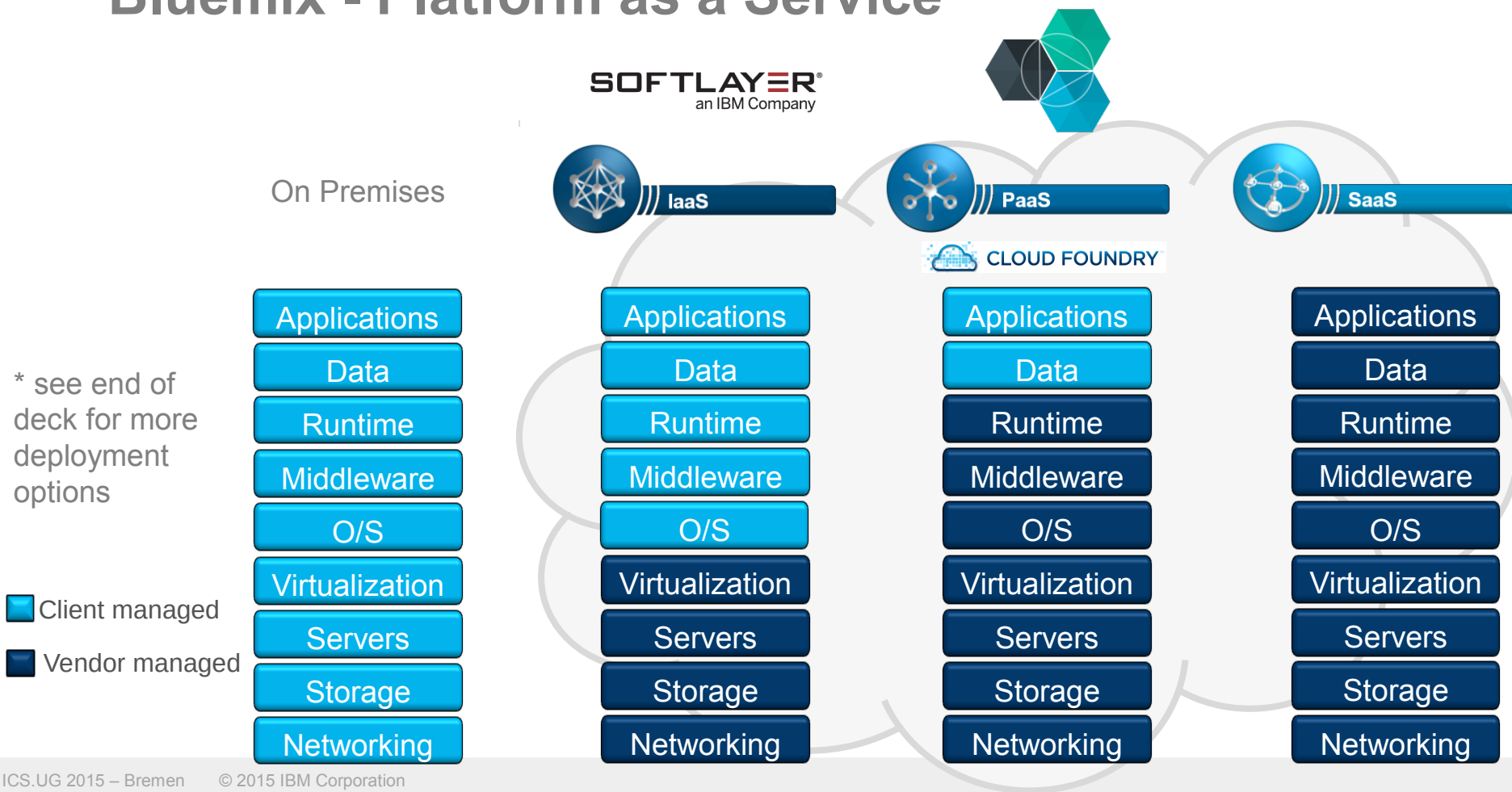
Trial	Analyse	Pilot	onboarding
Kostenloser Test für Connections Cloud	DoubleCheck HealthCheck OPT	Hybrid setup oder service only Pilot MOM Pilotgruppe	Finaler hybrid setup Onboarding via MOM oder OPT / OTT Gruppenweises Onboarding

(Grobschema bitte im konkreten Fall mit IBM Business Partner / IBM Technical Sales / ISSC absprechen)

Agenda

- Bluemix Introduction
- IBM Domino XPages Applications on Bluemix
- Social File Sharing Service based on Connections
- Bluemix – IBM's Cloud Platform

Bluemix - Platform as a Service



What is Bluemix?

Bluemix is an open-standard, cloud-based platform for building, managing, and running applications of all types (web, mobile, big data, new smart devices, and so on)



Go Live in Seconds

The developer can choose any language runtime or bring their own. Zero to production in one command.

APIs and Services

A catalog of IBM, third party, and open source API services allow the developer to stitch an application together in minutes.

On-Prem Integration

Build hybrid environments. Connect to on-premises assets plus other public and private clouds.

DevOps

Development, monitoring, deployment, and logging tools allow the developer to run the entire application.

Layered Security

IBM secures the platform and infrastructure and provides you with the tools to secure your apps.

Flexible Pricing

Try services for free and pay only for what you use. Pay as you go and subscription models offer choice and flexibility.

What Benefits does Bluemix provide?

Hosting of applications in the cloud (obviously)



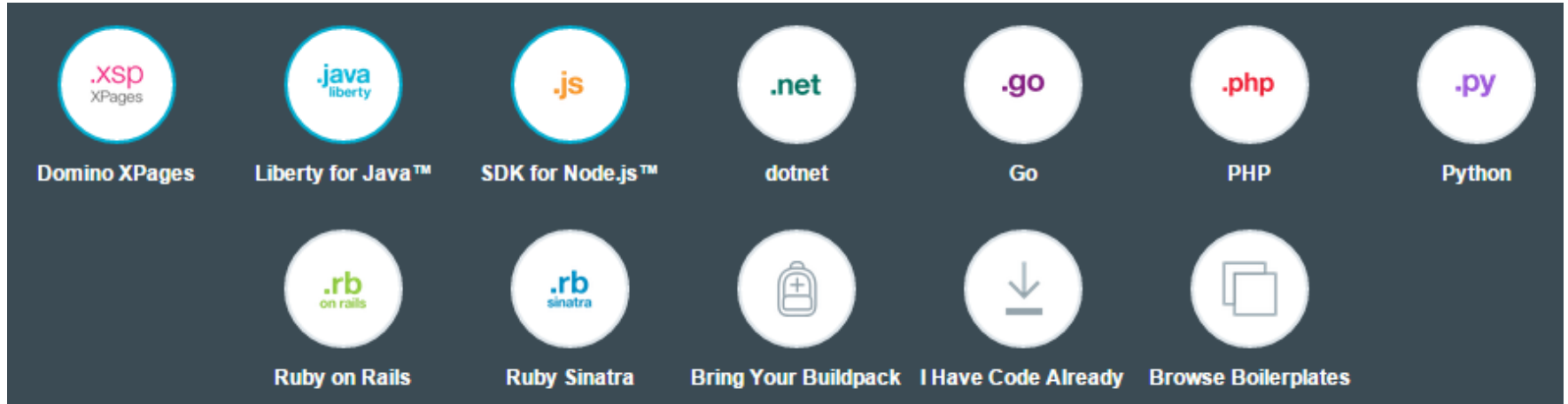
What Benefits does Bluemix provide?

Developers can focus on what they like to do most – coding



What Benefits does Bluemix provide?

Choices of runtimes



What Benefits does Bluemix provide?

Services, lots of services

Web and application

Mobile

Data management

Watson

Analytics

Internet of things

Security

Integration



What other Benefits does Bluemix provide?



DevOps for the entire application lifecycle



Integration of on-premises applications



Flexible pricing

What Benefits does Bluemix provide?

Auto Scalability



Policy Configuration | Metric Statistics | Scaling History

[Back](#) | Edit Auto Scaling Policy

The name of the policy:

The minimum number of application instances:

The maximum number of application instances:

Scaling Rule(s)

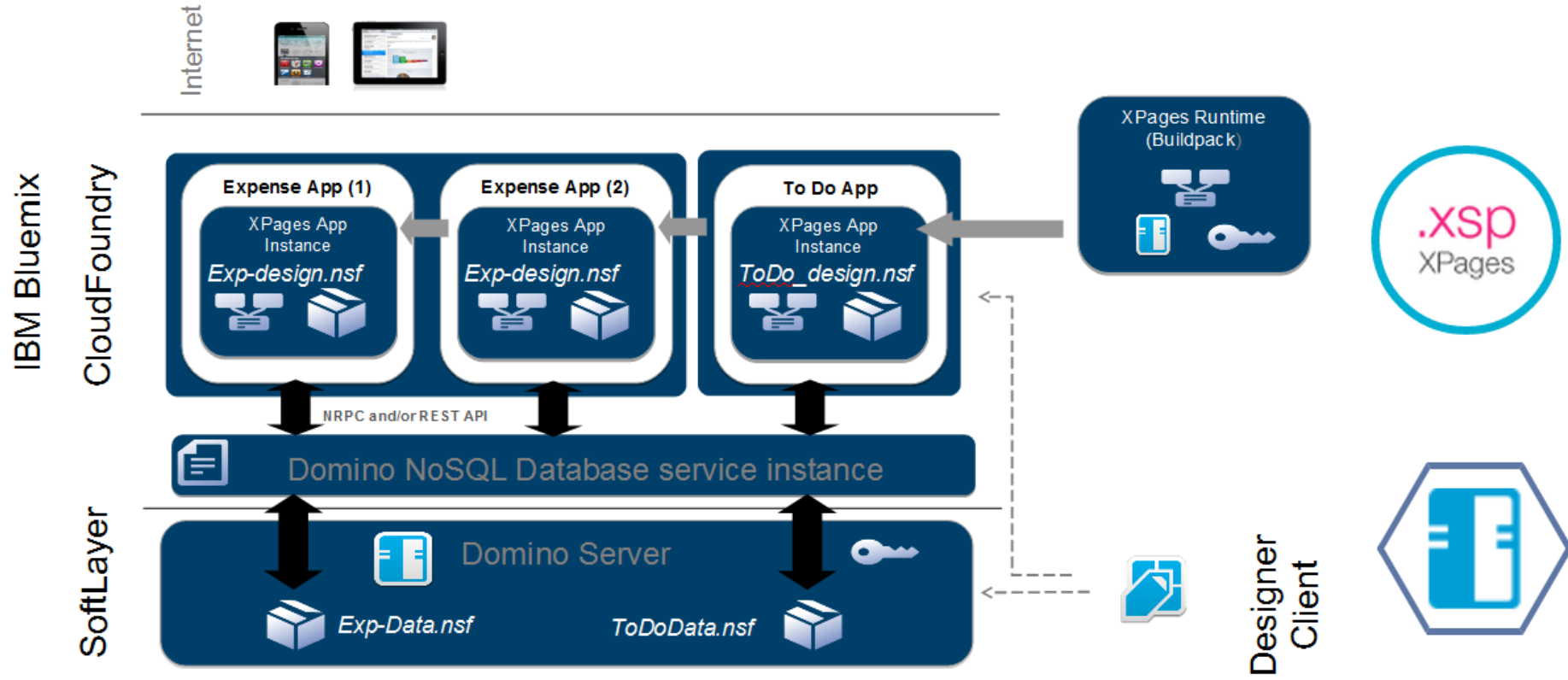
▼ Rule 1
Add 1 instance if Memory Average exceeds 80% for 120 seconds.
Remove 1 instance if Memory Average is below 30% for 120 seconds

Metric Type:

Scale Out: If average Memory utilization exceeds %, then increase instance(s) ▼

Scale In: If average Memory utilization is below %, then decrease instance(s) ▼

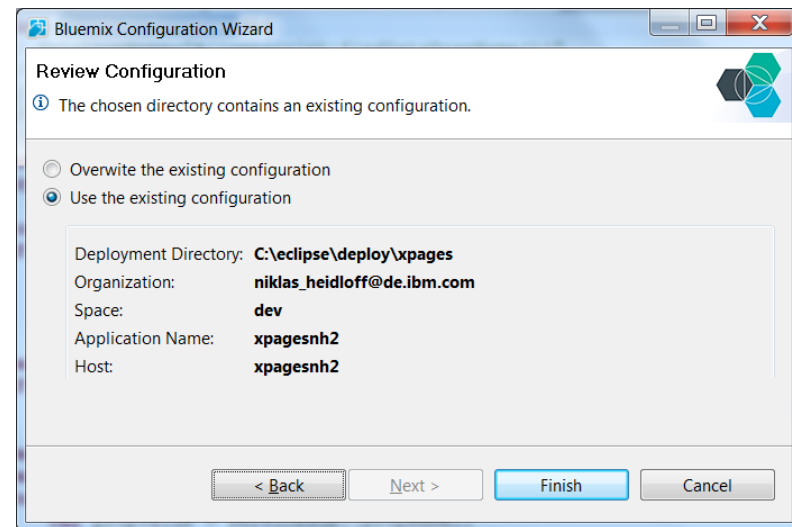
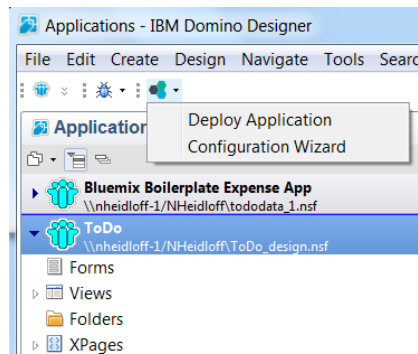
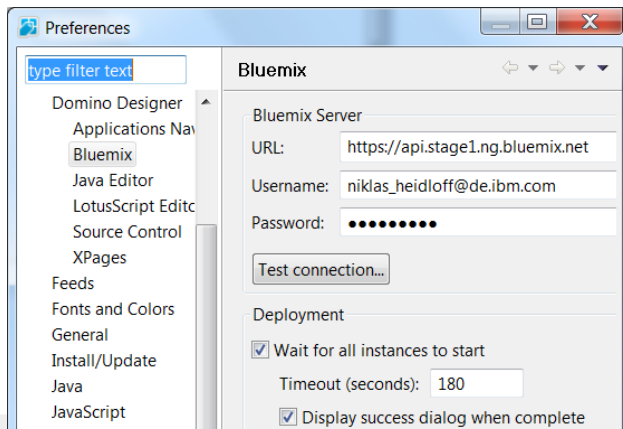
Domino XPages Runtime and Domino Data Service





Domino XPages Runtime

- Design NSF's contain only code, no data
- Design NSF's are deployed onto Bluemix and multiple application instances can be run
- Deployment can be done via a new plugin for Domino Designer



Domino XPages Runtime

- From design NSFs Bluemix services can be accessed via REST APIs or client libraries
- Data NSFs can be accessed via a new utility method "findDataBaseName"

```
<xe:this.data>
  <xp:dominoView var="view1" viewName="todosView"
    databaseName="#{javascript:findDataBaseName()} ">
  </xp:dominoView>
</xe:this.data>
```

```
function findDataBaseName() {
  // databaseName="#{javascript:findDataBaseName()} "
  // when running in bluemix:
  //   databaseName="169.53.5.247!!bluemix/83ea4d0a-8e3e-4e2e-aa81-d21e75dd2738/tododata_1.nsf"
  // when testing locally:
  //   databaseName="tododata_1.nsf"
```

Domino Data Service



- Data NSFs store only data and views
- Data NSFs can be accessed via REST APIs or via XPages data sources
- Each Bluemix developer gets his/her own data service instance provisioned including a Notes id to access the service

Domino Data Service for Bluemix

Domino Data Service Dashboard

Instructions Text: Outline the basic steps here that the user needs to take to download the id, login to Designer, connect to the data store and setup forms/views. See the [Documentation](#) for more detailed instructions.

User Details	
ID Download	bf6df5ba-1ef3-4ee5-bbfd-fe6c792dc9b1.id
Domino User Name	bf6df5ba-1ef3-4ee5-bbfd-fe6c792dc9b1
Password	NAjr2TAY
Domino Folder	bluemix/2ed98ab5-b6ee-4152-9456-5fc023b9bef8
Domino Host Name	9.39.221.87

XPages Boilerplate



Domino XPages Starter Application

IBM

This sample application demonstrates how to use a Domino XPages application connected to a Domino Data service.

VERSION
0.0

TYPE
Boilerplate



Domino Data

Develop and deploy Domino XPages applications in the cloud.

[VIEW DOCS](#)

Pick a plan

Monthly prices shown are for country or region: United States

Plan	Features	Price
✓ Default	Run one or more apps free for 30 days (375 GB-hours free, shared across Bring Your Buildpack and Community runtimes).	\$0.07 USD/GB-Hour



This is a service plan for the IBM Bluemix Platform runtime.

[TERMS](#)

Create an app:

Space:

dev

Name:

Enter new app name

Host:

Enter host

Domain:

stage1.mybluemix.net

Selected Plans:

Domino XPages

Default


Domino Data

Free

CREATE

[Home](#)[To-Dos](#)[Complete](#)[Urgent](#)[Overdue](#)To-Do **0**Completed **4**Urgent **0**Overdue **0**

To-Do

Priority Due  Book Connected Hotel

High

Jan 23, 2015

 Prepare Connected presentation

High

Jan 1, 2015

 Make Connected Air Reservations

Low

Feb 16, 2015

 Demo to Slovenian Police

High

Feb 16, 2015

[New To-Do](#)[Delete](#)[Mark Complete](#)[Mark Incomplete](#)

1





Team Expenses My Expenses 3 Tasks

Create

Delete

Select... ▼

Filter

Title	Submitter	Amount	Status
<input type="checkbox"/> Paris Customer Enablement	Ron Segal	\$1200.00	Submitted ▼
<input type="checkbox"/> Dinner w/client	Larry Moriarty	\$265.00	Approved ▼
<input type="checkbox"/> Belfast Workshop	Larry Moriarty	\$3000.00	Rejected ▼
<input type="checkbox"/> Boston BP/DP XPages Preview	Ron Segal	\$3050.00	Rejected ▼
<input type="checkbox"/> Norway Workshop	Ron Segal	\$2555.00	Submitted ▼
<input type="checkbox"/> Paris Customer Enablement	Larry Moriarty	\$1200.00	Approved ▼
<input type="checkbox"/> Finland Workshop	Ron Segal	\$2550.00	Approved ▼
<input type="checkbox"/> Japanese Workshop	Larry Moriarty	\$2550.00	Approved ▼



Usage of the a Watson Service in XPages

IBM Watson and XPages

Question and Answer



This XPages example application running on Bluemix uses Watson's Question and Answer (QA) service. The Watson QA service interprets and answers user questions directly based on primary data sources (brochures, web pages, manuals, records, etc.) that have been selected and gathered into a body of data or 'corpus'. The service returns candidate responses with associated confidence levels and links to supporting evidence. The current corpora that are available in Bluemix focus on the Travel and Healthcare industries.

- ☒ Healthcare
- ☐ Travel

Question :

What can I take against headache?



Usage of the SQL Service in XPages

Shopping

SQL DB



SQL Database Service and XPages Runtime

Milk



Eggs



Bread



Add

Access to Domino Directory for Authentication

- SAML
- LDAP identity bridge
- Third party solutions

The screenshot shows the 'Single Sign On-qk' configuration interface. At the top, there's a header with the IBM logo and the text 'Single Sign On-qk'. Below this is a navigation bar with a back arrow. The main content area is titled 'My SAML Enterprise' with a subtitle 'SAML Enterprise'. A section titled 'Configure Identity Source' contains two steps. Step 1, 'From Identity Provider', explains that the SAML Enterprise Identity Source allows an application to consume user identity information from a SAML Identity Provider. It prompts the user to enter the URL to initiate a SAML Single Sign-On flow from the Identity Provider, with a text input field below. It also prompts the user to upload the SAML 2.0 Identity Provider metadata file to enable the SAML Enterprise Identity Source to communicate with the Identity Provider, with an 'Upload File' button below. Step 2, 'To Identity Provider', explains that the SAML Enterprise Identity Source acts as a SAML Service Provider to obtain identity information. It prompts the user to download the SAML 2.0 Service Provider metadata file and give it to their identity provider to complete the configuration, with a 'Download File' button below. At the bottom right, there's a box with instructions to download the Identity Bridge from the IBM Fix Central web site and login with their IBM ID, with a 'Click here' link to view additional information on SAML.

Single Sign On-qk

←

My SAML Enterprise
SAML Enterprise

Configure Identity Source

Step 1 From Identity Provider

The SAML Enterprise Identity Source allows an application to consume user identity information from a SAML Identity Provider.

Enter the URL to initiate a SAML Single Sign-On flow from the Identity Provider:

Upload the SAML 2.0 Identity Provider metadata file to enable the SAML Enterprise Identity Source to communicate with the Identity Provider.

Upload File

Step 2 To Identity Provider

The SAML Enterprise Identity Source acts as a SAML Service Provider to obtain identity information.

Download the SAML 2.0 Service Provider metadata file. Give the file to your identity provider to complete the configuration.

Download File

Download the Identity Bridge from the [IBM Fix Central](#) web site. Login to the site with your IBM ID.

[Click here](#) to view additional information on SAML.

Workload Scheduler Service

- Runs tasks on a scheduled basis
- Similar to the Domino agent manager

IBM Workload Automation on Cloud - Application Lab Messages 0 Preferences niklas_heidloff@de.ibm.com

PROCESSES STATUS OVERVIEW PROCESS LIBRARY

PROCESS LIBRARY

+ New Delete

- BlueMix
- My processes

BlueMix

+ New Run now Copy Paste Disable Delete

Name	Status	Triggers	Last Run Result	Last Run Date	Creation Date
BluemixInfo	Enabled	Scheduled	✓ Success...	12/17/14, 4:51...	12/12/14, 9:50...

Triggers

+ New Delete View Rerun Option

Trigger	Details	Start Date
Schedule	Daily, every 1 days	12/18/14, 7:00 PM
Schedule	Daily, every 1 days	12/18/14, 8:00 PM
Schedule	Daily, every 1 days	12/18/14, 9:00 PM
Schedule	Daily, every 1 days	12/18/14, 10:00 PM
Schedule	Daily, every 1 days	12/18/14, 11:00 PM
Schedule	Daily, every 1 days	12/19/14, 12:00 AM
Schedule	Daily, every 1 days	12/19/14, 1:00 AM
Schedule	Daily, every 1 days	12/19/14, 2:00 AM
Schedule	Daily, every 1 days	12/19/14, 3:00 AM

AGENTS

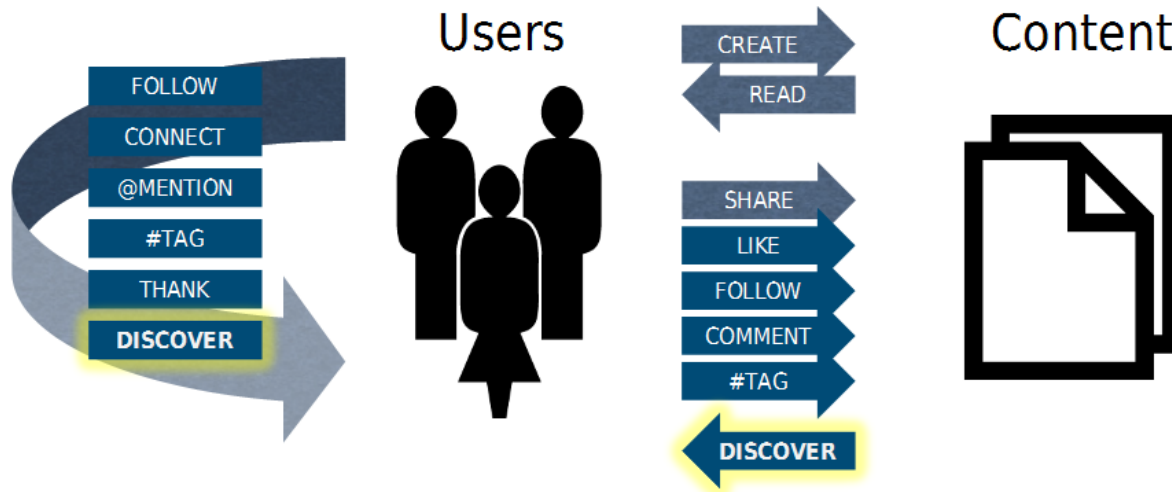
	Name	Operating System
✓	BF_CL OUD	Other

Why should you use XPages on Bluemix?

- To leverage other Bluemix services to build new apps rapidly
- To always have the state of the art XPages runtime at your fingertips
- To scale your apps and obtain true resiliency
- To leverage your XPages skills
- To host your applications easily in the cloud

Social Applications

An application is made "social" when user actions on their artifacts can be propagated to other users based on their relationship to the artifacts and/or to the people acting on them enabling for the discovery of artifacts and people which otherwise would not take place



Integration of IBM Connections Cloud with Bluemix

- Based on IBM Connections Cloud: Social File Sharing
- Initially in experimental mode and targeting Java runtimes
 - Uses trial organizations in IBM Connections Cloud
- Value
 - Automatic provisioning and de-provisioning of organization and users
 - Guidance, examples and documentation geared towards development of cloud based social applications

Social File Sharing Service

Web and Application
Deliver new web and mobile apps

Business Rules
IBM

Data Cache
IBM

Gamification
IBM BETA

MQ Light
IBM

Workflow
IBM

Workload Scheduler Beta
IBM BETA

CloudAMQP
Third Party

Geocoding
Third Party

Validate Address
Third Party

redis
Experimental

Social File Sharing
View More

Social File Sharing: Leverage the capabilities of IBM Connections Cloud to do more than simply store and share files -- socialize them with tagging, sorting, liking, and commenting.

Social File Sharing: Leverage the capabilities of IBM Connections Cloud to do more than simply store and share files -- socialize them with tagging, sorting, liking, and commenting.

redis
Experimental

Social File Sharing
View More

Social File Sharing Service



Social File Sharing

Experimental

PUBLISH DATE
2/18/2015

TYPE
Service

[VIEW DOCS](#)



Warning: Experimental Service

This experimental service might not be stable. In the future, this service might change in ways that are not compatible with earlier versions. It is not recommended for use in production environments.

Leverage the capabilities of IBM Connections Cloud to do more than simply store and share files -- socialize them with tagging, sorting, liking, and commenting.



Pick a plan

Monthly prices shown are for country or region: [United States](#)

Plan

Features

Price

✓ Trial Organization in IBM Connections Cloud

Free



A trial organization is created for you in IBM Connections Social Cloud and includes user accounts for testing your applications.

[TERMS](#)

Add Service

Space:

BluemixInfo

App:

Select an application

Service name:

Social File Sharing-vo

Selected Plan:

Trial Organization in IBM Connec...

[CREATE](#)

Photo Share Sample Application

**Alan Goodwin**[Share my photos](#)

Categories

architecture art breakfast building
cantabria casino cathedral
chorizos churros city crabs
dessert
embutido fish **flowers** food
forest jamones landscape
lego leon market morcillas moss
nature nocturnal orange pink
pintxos prawns
raspberry red rock sansebastian
santander santillanadelmar seafood
sign spain stack statue stones
sunset tapas tree village violet
woman yellow yummy

Your most recent photos

View:

Most recent

Most viewed

Most popular



Views: 1

Likes: 1

1/21/2015, 9:42:58 AM



Views: 7

Likes: 0

1/19/2015, 2:36:23 PM



Views: 2

Likes: 2

1/19/2015, 2:19:08 PM



Views: 1

Likes: 1

1/19/2015, 2:19:02 PM



Views: 1

Likes: 1

1/19/2015, 2:18:57 PM



Views: 0

Likes: 2

1/19/2015, 2:18:50 PM



Views: 0

Likes: 3

1/19/2015, 2:18:40 PM



Views: 2

Likes: 1

1/19/2015, 2:18:35 PM

Bluemix – IBM's Cloud Platform

Three Deployment Environments

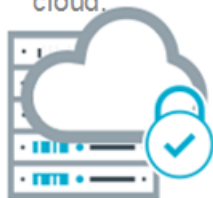
Public

Multi-tenant public cloud rolling out globally.



Dedicated

Bluemix in an isolated SoftLayer private cloud.



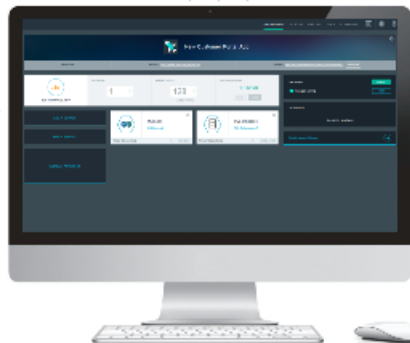
Local

Bluemix delivered as a managed service in your data center.



Syndicated Catalog

The catalog of IBM, 3rd party and private services is syndicated across Bluemix.



Ops Console

A single view of the health and status across apps and infrastructure.

Resources

- IBM Bluemix: bluemix.net
- IBM Bluemix News: bluemix.info
- IBM Bluemix Developers: developer.ibm.com/bluemix
- Samples: github.com/IBM-Bluemix
- Niklas Heidloff Blog: heidloff.net